

ROAD INDEX

I	R	ROCK CREEK RD —
J	S	SAWMILL DR. C4-C5 SISSON RD. E6-G6 SOUTH BROWN RD. B2-B3 SUMNER RD. F1-F2 SOMERSET DR. — M
K	T	TAYLOR WELLS RD. C6 TRISH LN (F)
L	U	
M	V	MARLIN DR (F) VENUS RD. E3E4
N	W	NORTH BROWN RD. B3-B4 WILLIAMS RD. E1E3 WOODIN RD. A4D4 WILWOOD DR. B3 WILLOW LANE. D1
O	X	OLD STATE RD. B1E6
P	Y	PEARL RD. A2C2 PENNING DR. J4M
Q	Z	HIGH COUNTRY DR. E4 HOLI-DALE DR. C6

① HAMB DEN ELEMENTARY SCHOOL
 ② HAMB DEN CONGREGATIONAL CH.
 ③ CHRISTIAN & MISSIONARY ALLIANCE CH.
 ④ HAMB DEN CEMETERY
 ⑤ HAMB DEN VOL. FIRE DEPT.
 ⑥ HAMB DEN TOWN HALL

HAMB DEN TOWNSHIP

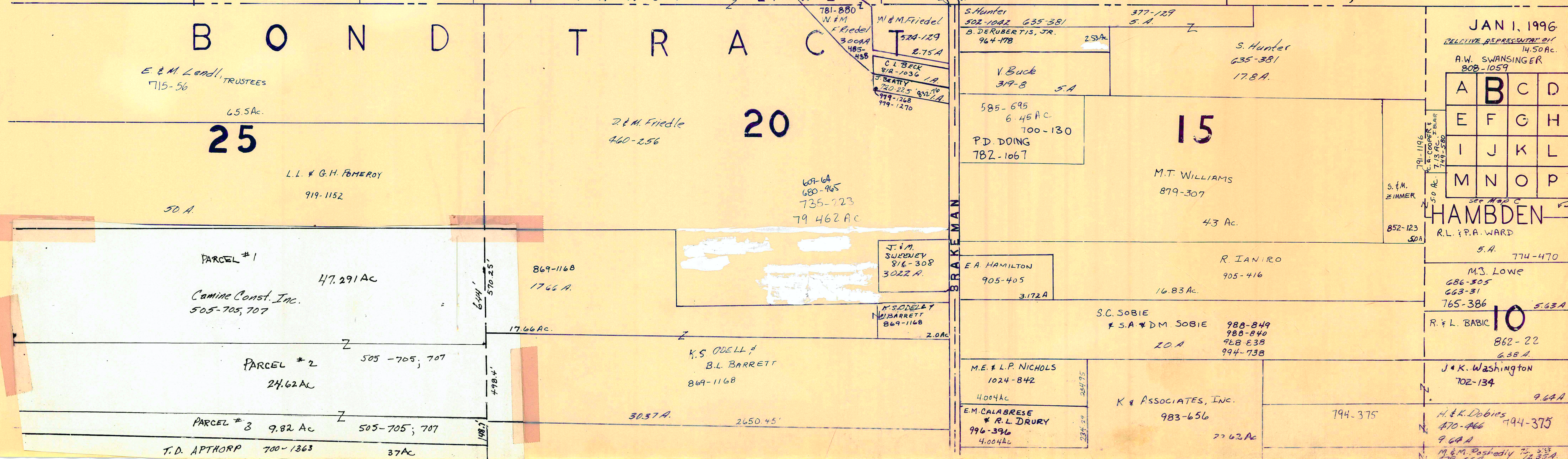
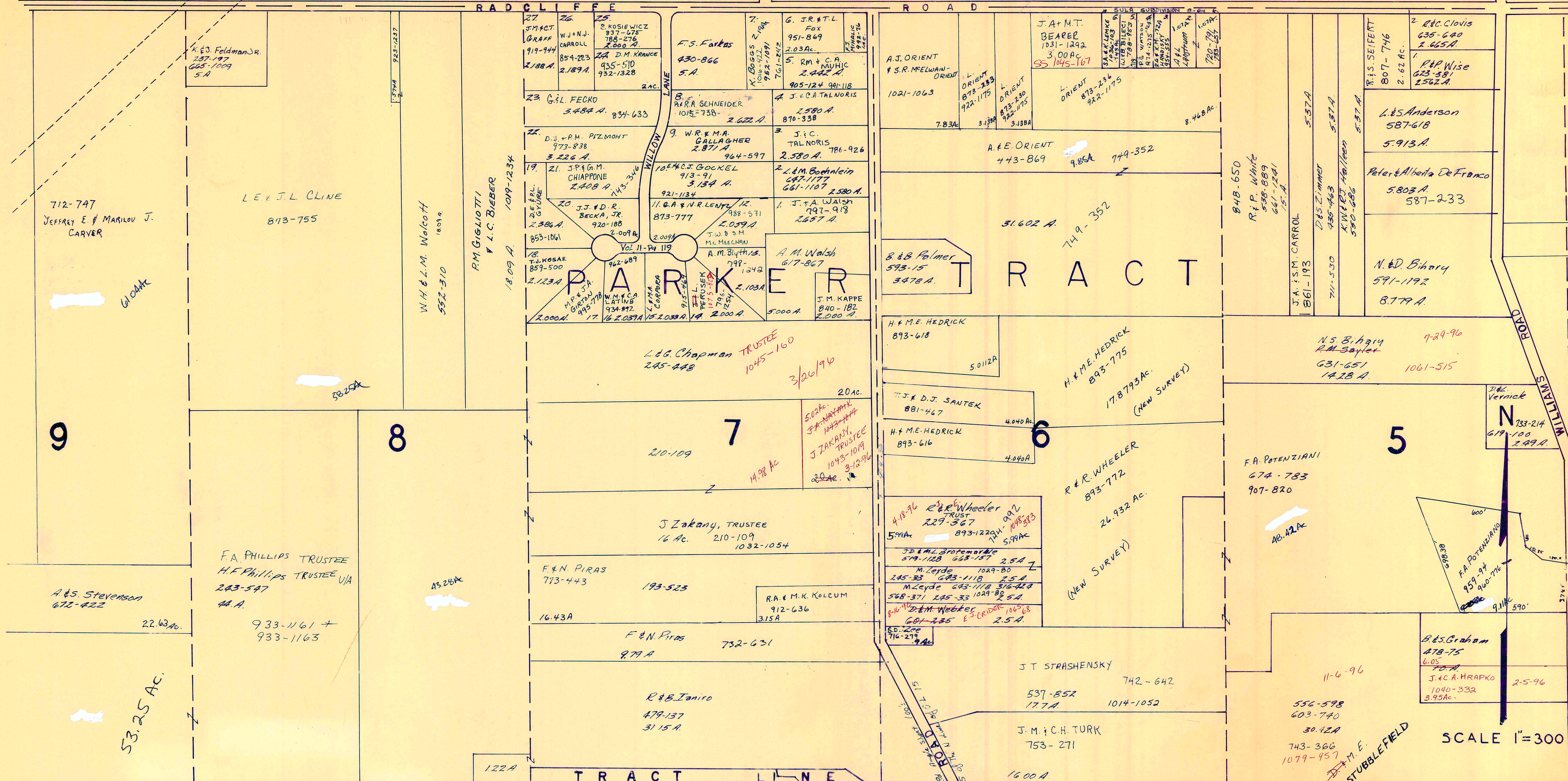
SCALE 1"=2000'
 ROBERT L. PHILLIPS,
 GEORGIA COUNTY ENGINEER

— UNPAVED ROAD
 — PAVED ROAD
 --- COUNTY LINE

+++ RAILROAD
 --- TOWNSHIP LINE
 --- CORPORATION LINE

L A K E C O U N T Y

RADCLIFFE ROAD



JAN 1, 1996
RELIEVE REPRESENTATION OF
14.50 AC.
A.W. SWANSINGER
808-1059

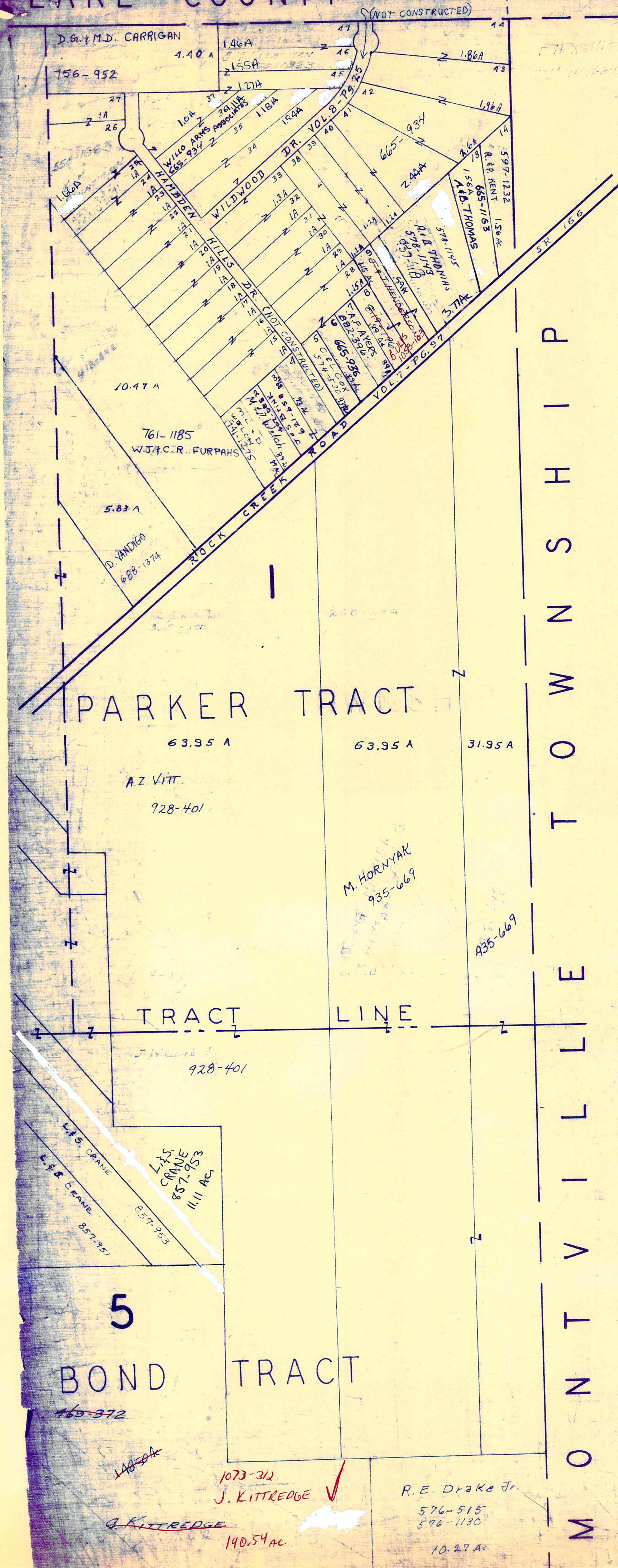
A	B	C	D
E	F	G	H
I	J	K	L
M	N	O	P

HAMBDEN TWP.

* Inadequate description indicates survey on file with tax mapdept.

LAKE COUNTY

THOMPSON TWP.



SCALE 1" = 300'

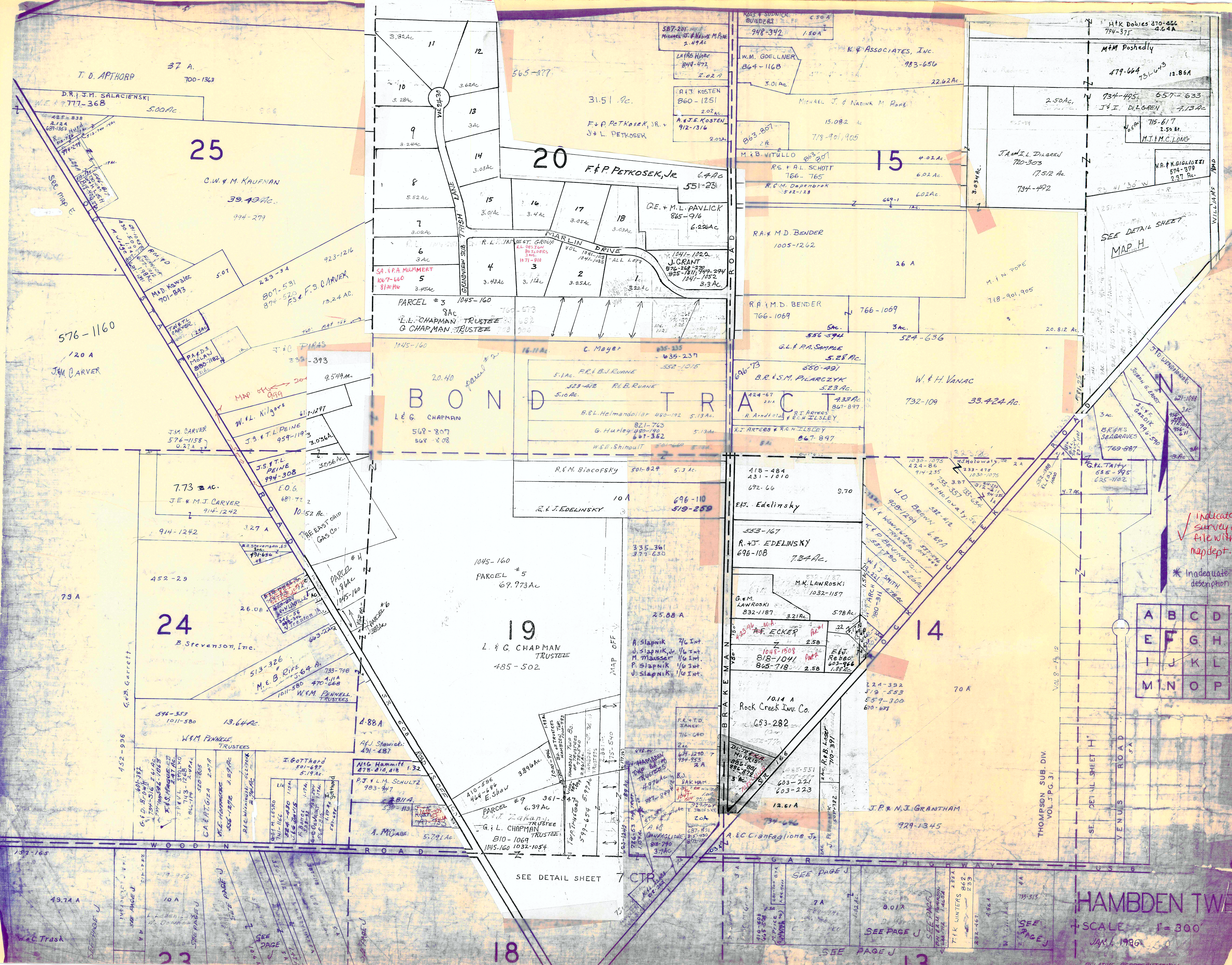
JAN. 1, 1996

A	B	C	D
E	F	G	H
I	J	K	L
M	N	O	P

HAMB DEN TWP.

RELATIVE REPRESENTATION

✓ indicates survey on file with tax dept.
 * Inadequate description



25

20

15

24

19

14

BOND TRACT

A	B	C	D
E	F	G	H
I	J	K	L
M	N	O	P

Indicates survey on file with tax map dept.

* Inadequate description

HAMBDEN TWP

SCALE 1" = 300'

JAN. 1996

49.71 A

W.C. Trask

SEE PAGE J

23

18

13

THOMPSON SUB. DIV. VOL. J.P.G. 31

SEE DETAIL SHEET H

VENUS ROAD

SEE DETAIL SHEET I

SEE PAGE J

SEE PAGE J

SEE PAGE J

SEE PAGE J

SEE PAGE J

SEE PAGE J

SEE PAGE J

SEE PAGE J

SEE PAGE J

SEE PAGE J

SEE PAGE J

SEE PAGE J

SEE PAGE J

SEE PAGE J

SEE PAGE J

SEE PAGE J

SEE PAGE J

SEE PAGE J

SEE PAGE J

SEE PAGE J

SEE PAGE J

SEE PAGE J

SEE PAGE J

SEE PAGE J

SEE PAGE J

SEE PAGE J

SEE PAGE J

SEE PAGE J

SEE PAGE J

SEE PAGE J

SEE PAGE J

SEE PAGE J

SEE PAGE J

SEE PAGE J

SEE PAGE J

SEE PAGE J

SEE PAGE J

SEE PAGE J

SEE PAGE J

SEE PAGE J

SEE PAGE J

SEE PAGE J

SEE PAGE J

SEE PAGE J

SEE PAGE J

SEE PAGE J

SEE PAGE J

SEE PAGE J

SEE PAGE J

SEE PAGE J

SEE PAGE J

SEE PAGE J

SEE PAGE J

SEE PAGE J

SEE PAGE J

SEE PAGE J

SEE PAGE J

SEE PAGE J

SEE PAGE J

SEE PAGE J

SEE PAGE J

SEE PAGE J

SEE PAGE J

SEE PAGE J

SEE PAGE J

SEE PAGE J

SEE PAGE J

SEE PAGE J

SEE PAGE J

SEE PAGE J

SEE PAGE J

SEE PAGE J

SEE PAGE J

SEE PAGE J

SEE PAGE J

SEE PAGE J

SEE PAGE J

SEE PAGE J

SEE PAGE J

SEE PAGE J

SEE PAGE J

SEE PAGE J

SEE PAGE J

SEE PAGE J

SEE PAGE J

SEE PAGE J

SEE PAGE J

SEE PAGE J

SEE PAGE J

SEE PAGE J

SEE PAGE J

SEE PAGE J

SEE PAGE J

SEE PAGE J

SEE PAGE J

SEE PAGE J

SEE PAGE J

SEE PAGE J

SEE PAGE J

SEE PAGE J

SEE PAGE J

SEE PAGE J

SEE PAGE J

SEE PAGE J

SEE PAGE J

SEE PAGE J

SEE PAGE J

SEE PAGE J

SEE PAGE J

SEE PAGE J

SEE PAGE J

SEE PAGE J

SEE PAGE J

SEE PAGE J

SEE PAGE J

SEE PAGE J

SEE PAGE J

SEE PAGE J

SEE PAGE J

SEE PAGE J

SEE PAGE J

SEE PAGE J

SEE PAGE J

SEE PAGE J

SEE PAGE J

SEE PAGE J

SEE PAGE J

SEE PAGE J

SEE PAGE J

SEE PAGE J

SEE PAGE J

SEE PAGE J

SEE PAGE J

SEE PAGE J

SEE PAGE J

SEE PAGE J

SEE PAGE J

SEE PAGE J

SEE PAGE J

SEE PAGE J

SEE PAGE J

SEE PAGE J

SEE PAGE J

SEE PAGE J

SEE PAGE J

SEE PAGE J

SEE PAGE J

SEE PAGE J

SEE PAGE J

SEE PAGE J

SEE PAGE J

SEE PAGE J

SEE PAGE J

SEE PAGE J

SEE PAGE J

SEE PAGE J

SEE PAGE J

SEE PAGE J

SEE PAGE J

SEE PAGE J

SEE PAGE J

SEE PAGE J

SEE PAGE J

SEE PAGE J

SEE PAGE J

SEE PAGE J

SEE PAGE J

SEE PAGE J

SEE PAGE J

SEE PAGE J

SEE PAGE J

SEE PAGE J

SEE PAGE J

SEE PAGE J

SEE PAGE J

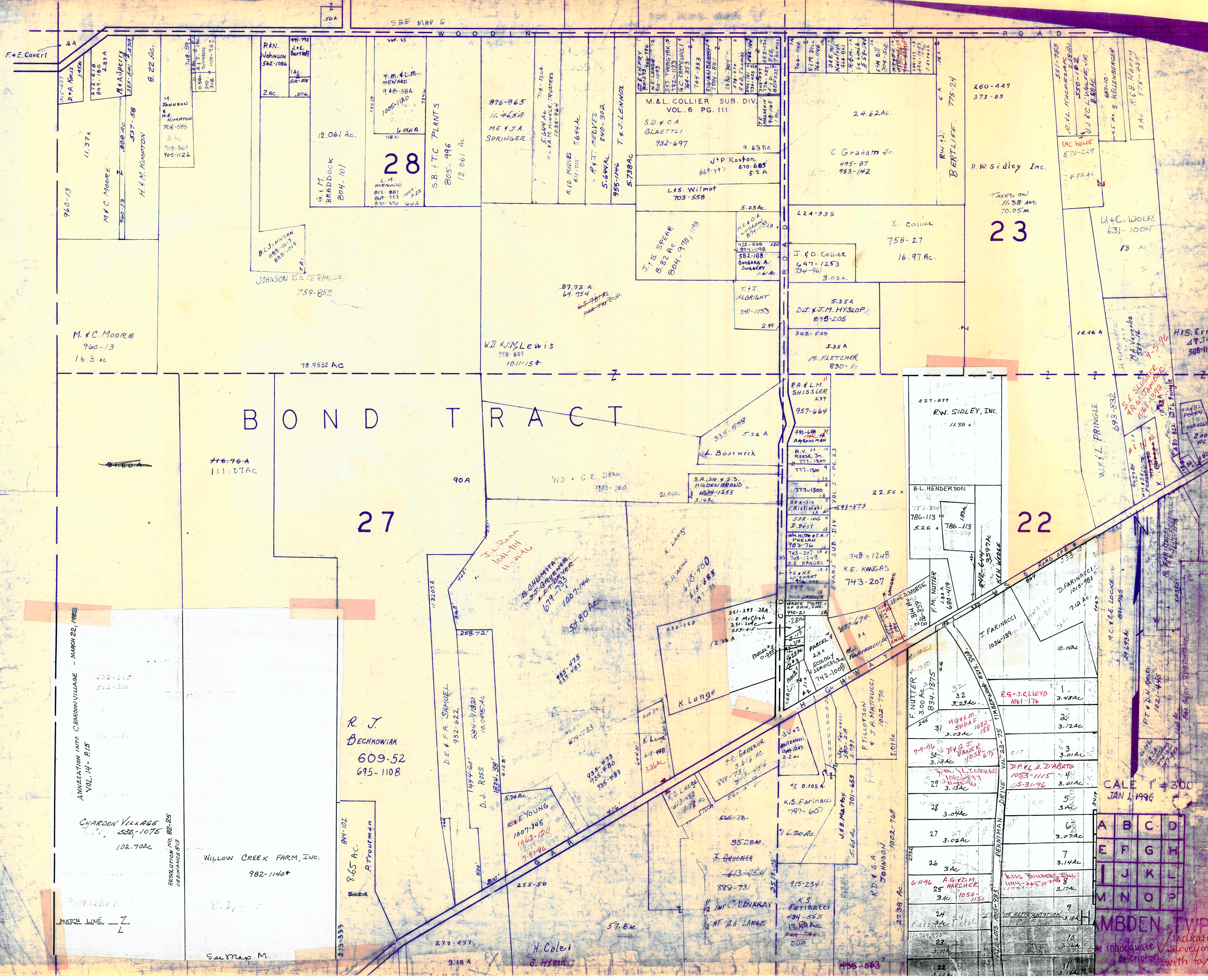
SEE PAGE J

SEE PAGE J

SEE PAGE J

SEE PAGE J

SEE PAGE J



BOND TRACT

27

23

22

ANNEXATION INTO CHARDON VILLAGE - MARCH 25, 1982
VOL. 14 - P. 15
CHARDON VILLAGE
RESOLUTION NO. 82-25
ORDINANCE 813

R. J. BECHOWIAK
609-52
695-1108

WILLOW CREEK FARM, INC.
982-1140*

CALE 1 = 300
JAN 1, 1996

A	B	C	D
E	F	G	H
I	J	K	L
M	N	O	P

MBDEN TWP
Indicates survey on file with tax map

G A R HIGHWAY US 6

3

169
7200A

Dockside Realty
679-738

BOND TRACT

R O A D
T O W N S H I P
L L E
M O N T V I L L E

2

- 1. 826-36 229-504 249A 5A
901-677 T.E. MICCO 4.98A
- 2. 430-952 4.98A
R & B Grant
983-950 53
- 3. KS & KA BENA
980-922 4.98A
874-565
- 4. R & E CROMBIE JR.
247-47 4.98A
657-263 255-369
257-142
- 5. G & H NEEL & M & R HARWELL
755-127 4.98A
R.L. WARD 1052-9
5-28-70 259-446
- 6. R. Kovaras 4.98A
259-219
- 7. H. Tomasin 4.98A
281-345 460-398
- 8. 460-480 4.98A
844-108
- 9. DR. SAE IGHAN 259-551
1051-622 5-22-71 498A
- 10. A & M. Burnett 4.98A
424-826 880-177
- 11. MRS & ALICE L. KOCAB 4.98A
726-586
- 12. PM & M.A. MALLOY 997-287
5.187A

817-625
817-627

S. Snopel

W. P & M M MONTAGUE
885-287

48467Ac.

R.M. G.A. CLOVAN
870-201

25Ac.



SCALE 1" = 300'

RELATIVE REPRESENTATION

A	B	C	D
E	F	G	H
I	J	K	L
M	N	O	P

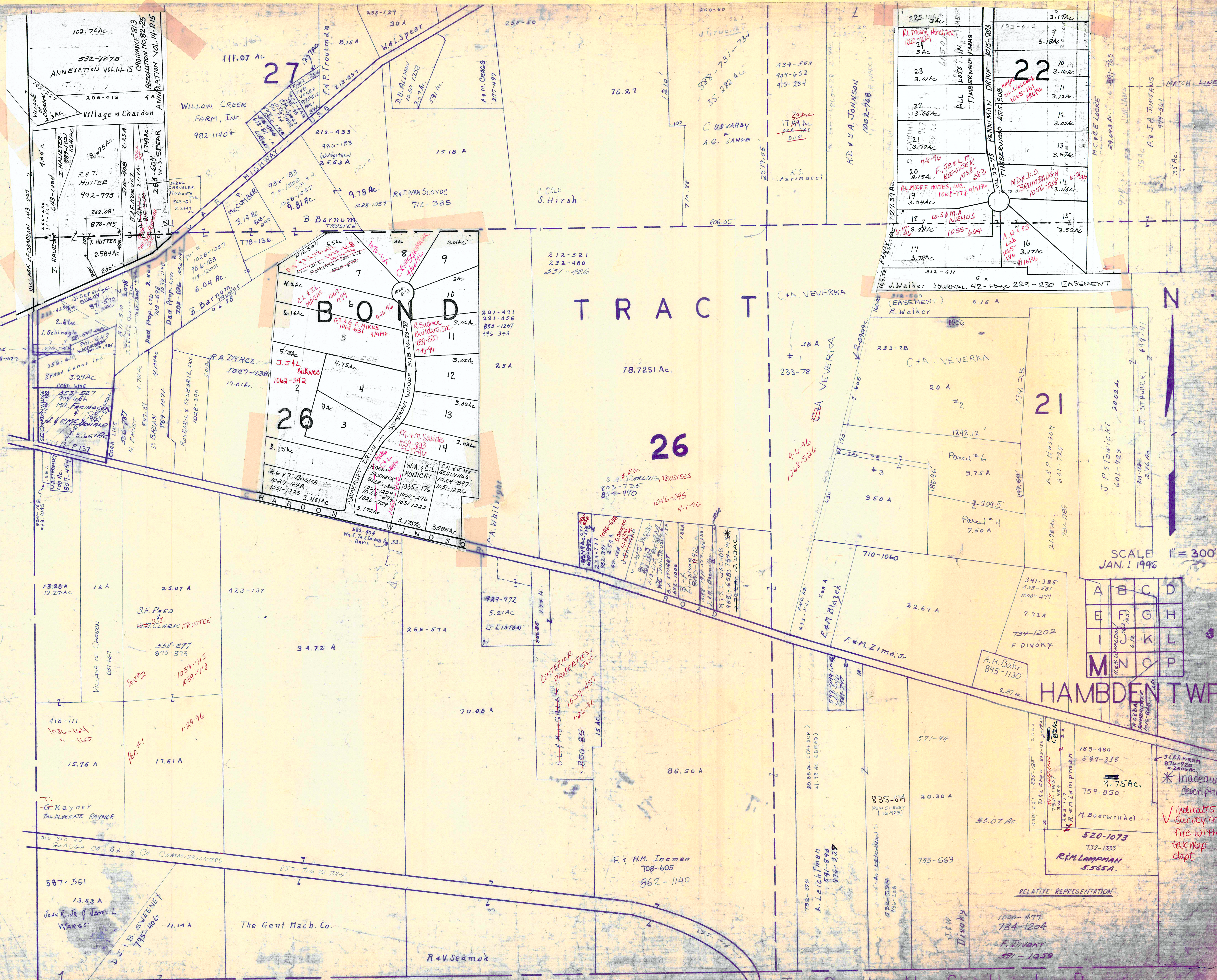
HAMB DEN TWP.

JAN / 1996

* Inadequate description

✓ indicates survey on file with tax map dept.

T O W N S H I P
C H A R D O N



27

22

BOND

T R A C T

26

21

SCALE 1" = 300'
JAN. 1 1996

A	B	C	D
E	F	G	H
I	J	K	L
M	N	O	P

HAMBLEN TWP.

* inadequate description
✓ indicates survey on file with tax map dept

RELATIVE REPRESENTATION

102.70 AC
532-1275
ANNEXATION VOL 14-15
ORDINANCE # 813
RESOLUTION NO 80-25
ANNEXATION VOL 14-15
RESOLUTION NO 80-25

111.07 AC

WILLOW CREEK FARM, INC.
982-1140*

76.27

35.282 AC

434-563
909-652
915-234

225.14 AC
3.17 AC
3.18 AC
3.12 AC
3.25 AC
3.57 AC
3.14 AC
3.17 AC
3.52 AC

23 3.0 AC
22 3.66 AC
21 3.79 AC
20 3.15 AC
19 3.04 AC
18 3.28 AC
17 3.78 AC

201-471
221-456
855-1267
896-348

212-521
232-480
551-426

78.7251 AC

38 A
233-78

20 A
1242.12
9.75 A
7.09.5'
7.50 A

710-1060
22.67 A
7.72 A
734-1202
F. DIVOKY
A. H. Bahr
845-1130
2.87 AC

189-480
599-338
A. 75 AC
759-850
M. Boerwinke
520-1073
732-1335
R. M. LAMPMAN
5565 A.

1000-477
734-1204
F. DIVOKY
591-1059

13.28 A
12.25 AC

12 A

25.07 A

423-797

94.72 A

266-574

999-972
5.21 AC
J. LISTON

70.08 A

86.50 A

571-94

835-674
NEW CARRIES
(16-925)

20.30 A

733-663

57-94

189-480
599-338
A. 75 AC
759-850
M. Boerwinke
520-1073
732-1335
R. M. LAMPMAN
5565 A.

1000-477
734-1204
F. DIVOKY
591-1059

587-561
13.53 A
John R. & James L. WARGO

11.14 A

The Gent Mach. Co.

R. V. Sedmak

102.70 AC
532-1275
ANNEXATION VOL 14-15
ORDINANCE # 813
RESOLUTION NO 80-25
ANNEXATION VOL 14-15
RESOLUTION NO 80-25

111.07 AC

WILLOW CREEK FARM, INC.
982-1140*

76.27

35.282 AC

434-563
909-652
915-234

225.14 AC
3.17 AC
3.18 AC
3.12 AC
3.25 AC
3.57 AC
3.14 AC
3.17 AC
3.52 AC

23 3.0 AC
22 3.66 AC
21 3.79 AC
20 3.15 AC
19 3.04 AC
18 3.28 AC
17 3.78 AC

201-471
221-456
855-1267
896-348

212-521
232-480
551-426

78.7251 AC

38 A
233-78

20 A
1242.12
9.75 A
7.09.5'
7.50 A

710-1060
22.67 A
7.72 A
734-1202
F. DIVOKY
A. H. Bahr
845-1130
2.87 AC

189-480
599-338
A. 75 AC
759-850
M. Boerwinke
520-1073
732-1335
R. M. LAMPMAN
5565 A.

1000-477
734-1204
F. DIVOKY
591-1059

587-561
13.53 A
John R. & James L. WARGO

11.14 A

The Gent Mach. Co.

R. V. Sedmak

356-65
State of Ohio

94 A

427 993

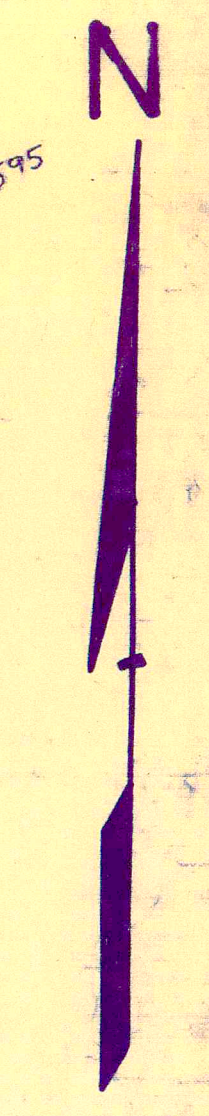
147.40 A

48.467Ac.

W.P. & M.M. MONTAGUE
883-287
SEE MAP
PGS.
K, L & P

R.M. & G.A. CLOONAN
870-201

25Ac



State of Ohio

7

17.98 Ac.
356-67
State of Ohio

2

± 100 A

764-769

P.A. SPISAK

260-274

P.A. SPISAK
764-769

31.80 A

P. Spisak

266-581

SCALE 1" = 300'

A	B	C	D
E	F	G	H
I	J	K	L
M	N	O	P

HAMB DEN TWP.

BOND

TRACT

582.34 Ac.

6

State of Ohio

JAN 1, 1996

RELATIVE REPRESENTATION

* Inadequate description

✓ indicates survey on file with tax map dept.

J.P. & H.J. GRANTHAM 949-1412 4.24Ac	F. LIOTTA & D. AMATEA 679-1228 2.01Ac	T. & M. WHEELER 698-1104 2.45Ac	NEW SURVEY 17.23Ac 18.462Ac C.D. & K.M. M. CONNELL 1071-741	B. & R. KEENE 536-906	R. & M. LANG 611-1173 2.19Ac	R.E. & M.M. ROSTHAKI 1044-33 1044-35 2.17Ac	3186.13'	631-332	80.70 A	M. JOHNSON 216	2.81 A	553-287 2.84Ac	805-513 E.W. Kaminicki 1.63-22-103-319	901-299 B.B. & S.E. Bishop 2.85Ac	879-404 R.P. & K.A. SUDANIK 2.895Ac	749-22 G.M. & W. J.P. M. WIRNA 2.85Ac	VACATED 4-20-71 J.P. ROSS S.U. 890-461 4.292 Ac	M. HERBERT 721-727 4.24 Ac	765-221 D.A. & W. STENBERGER 2.862 A	734-185 G.A.S. 86	RE. WYATT 2.86 Ac	746-660 J. BARTONE 2.19Ac	714-178 J.A. BARTONE 2.19Ac	3A J. ARRINGTON 2.86 Ac	667-864 4.63-864	N. POMERSNY 2.86 Ac
--	---	---------------------------------------	---	--------------------------	------------------------------------	--	----------	---------	---------	-------------------	--------	-------------------	--	---	---	---	---	----------------------------------	--	----------------------	----------------------	---------------------------------	-----------------------------------	-------------------------------	---------------------	------------------------

750-789
2.04Ac
M.T. FLYNN
AD. MACK
1.99Ac
1014-1297
R.D. DIESEN
1Ac

669-1087
1028
G.S. KOENIG

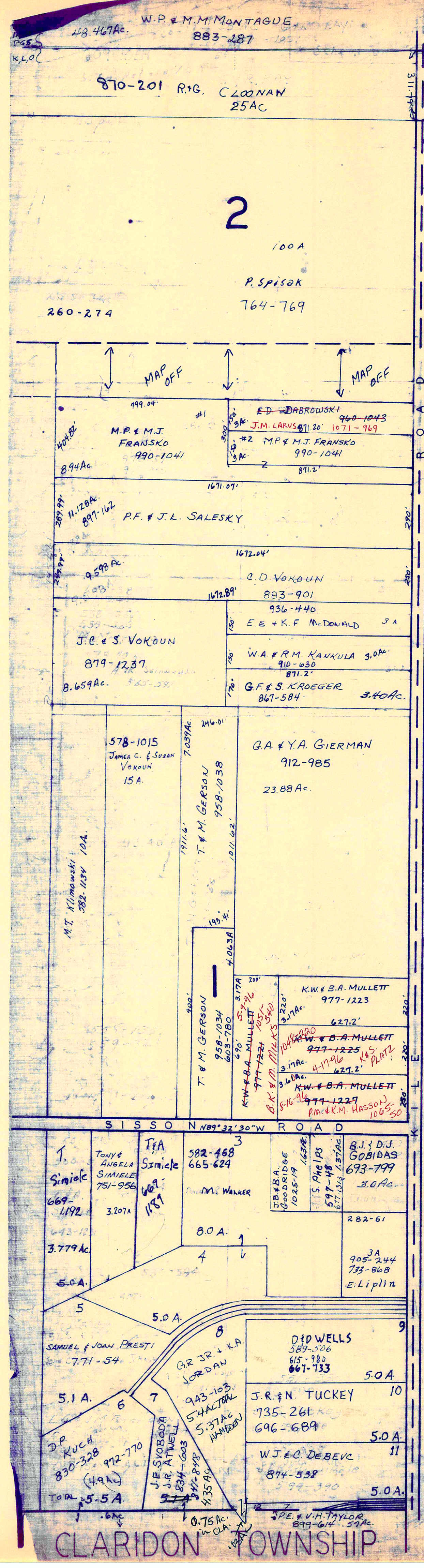
J. & R. Mobasser

(22.46 A) HAMB DEN
TOTAL AC. 25.217Ac
complete Construction
Service, Inc.
673-1329

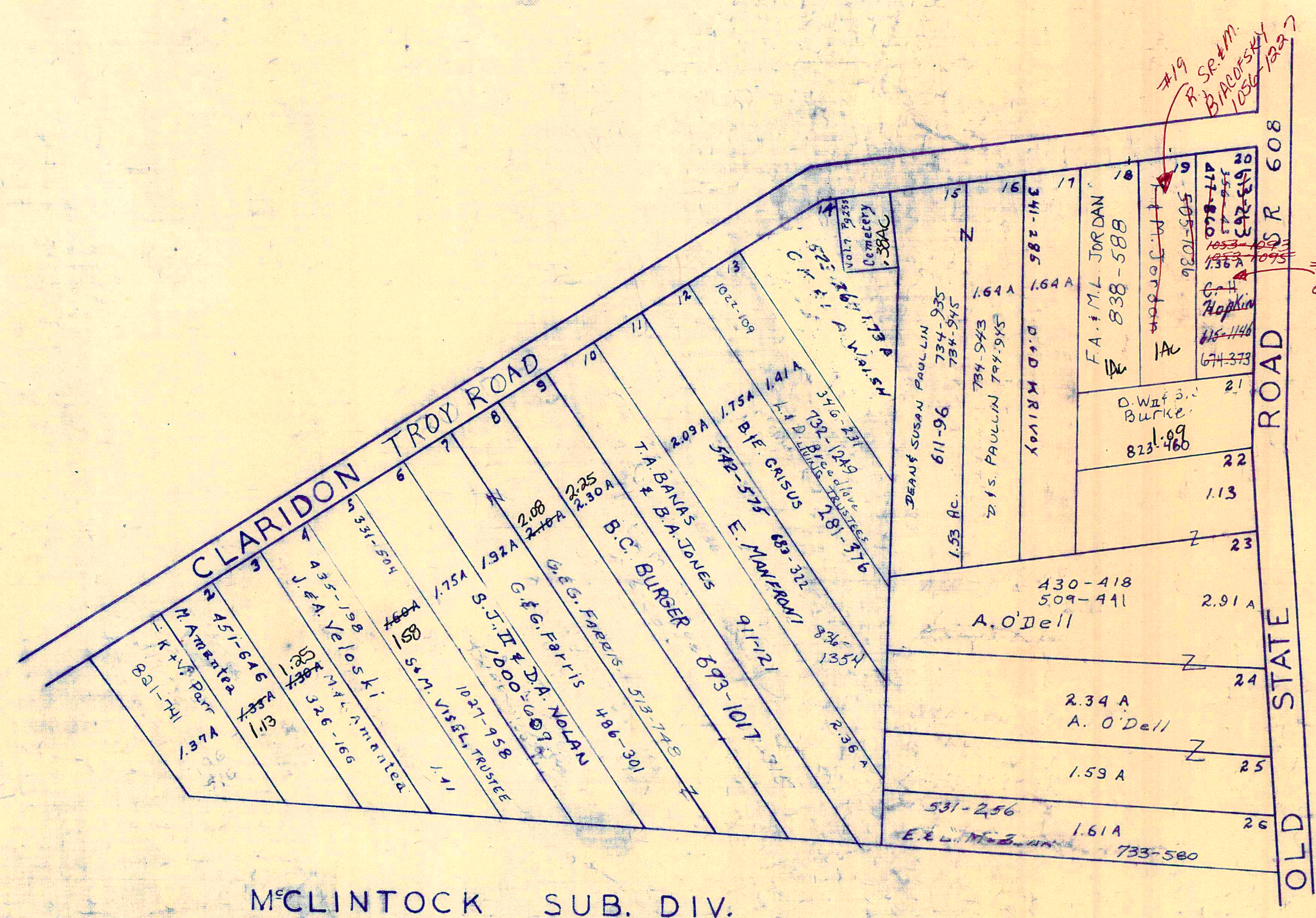
667-252 to 255
parcel # 2 49.61Ac
508-1073
612 GPOH
621-823
667-252 to 255
parcel # 1
27.90Ac

See map P

C L A R I D O N T O W N S H I P



MONTVILLE TOWNSHIP



M'CLINTOCK SUB. DIV.
VOL. 6 PG. 209
LOT 6 & 11 BOND TR.
Scale 1"=200'



SCALE 1" = 300'
JAN 1, 1996

A	B	C	D
E	F	G	H
I	J	K	L
M	N	O	P

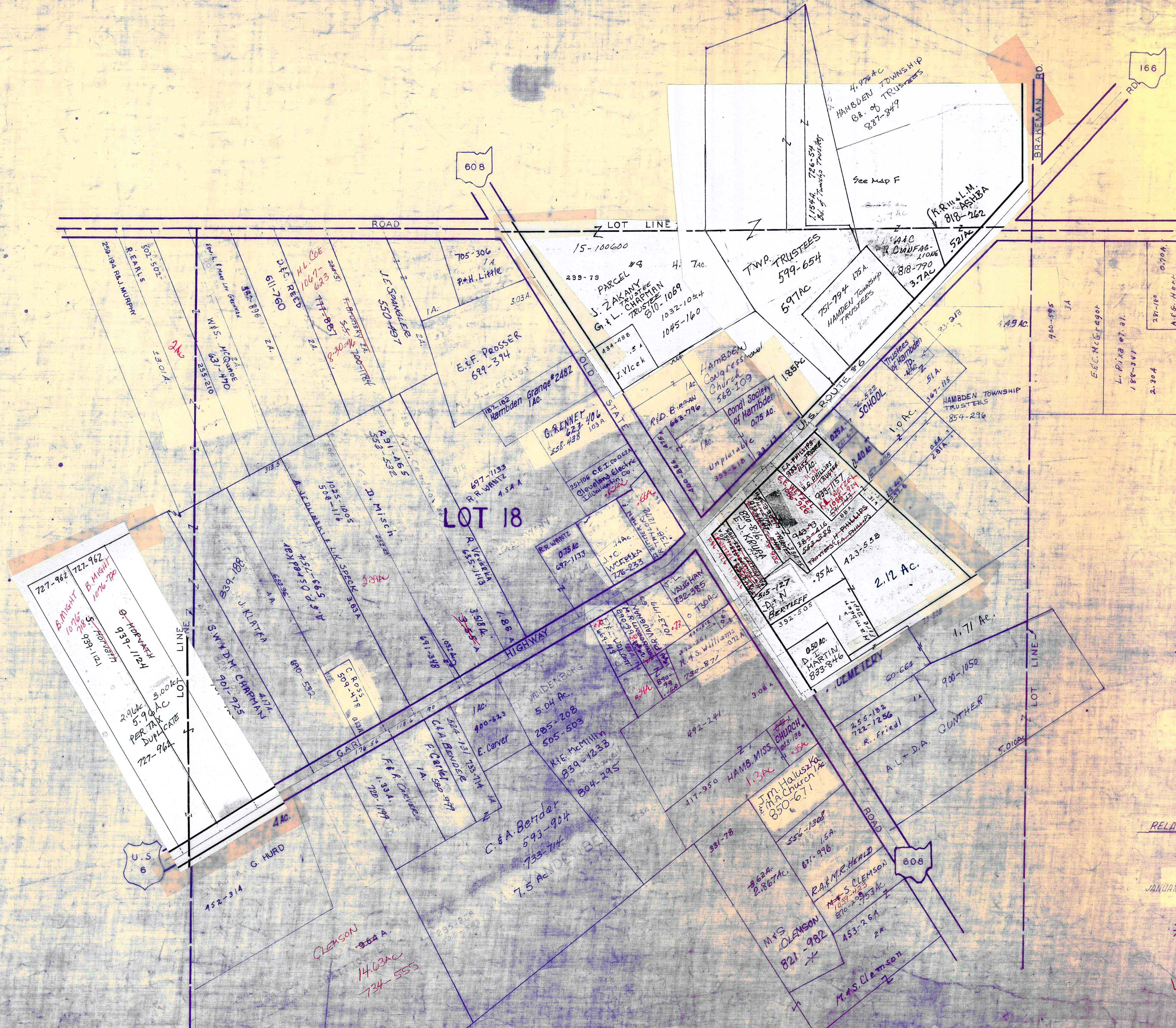
HAMB DEN TWP.

RELATIVE REPRESENTATION

* Inadequate description

✓ indicates survey on file with tax map dept.

Handwritten notes in red ink:
#19 SRM
B. BRODOWSKI
1050-1027
#20
C.L. & J.E. BROCKWAY
1052-1021
T.J. & B.J. MARUNA
1053-1099
5-31-96



727-962 727-962
 B. MIGHT 10/6/76
 5.700 AC
 937-1124
 6. HURD 937-1124
 3.00 AC
 5.9 AC
 PER TAX DUPLICATE
 727-962

SCALE 1 in. = 25 ch. or 165 ft.

LOT 18
 HAMB DEN TWP.
 HAMB DEN CENTER
 DETAIL SHEET 9 CTR

RELATIVE REPRESENTATION

JANUARY 1, 1996

* Inadequate description

✓ indicates survey on file with tax map dept.

HAMB DEN 1886

9 CTR